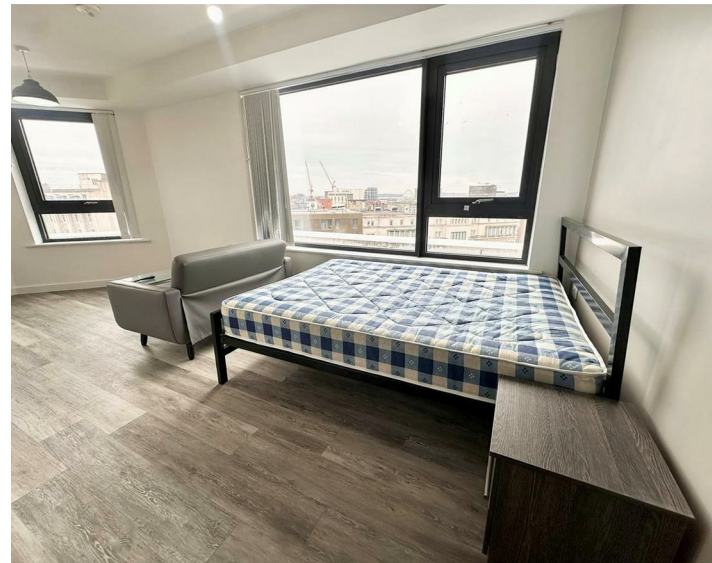




Apt 92 4 Leigh Street, Liverpool, L1 1NT
£725 PCM

www.
cityresidential
.co.uk



About the Property

AVAILABLE NOW – a well presented sixth floor studio apartment located at Apt 92, 4 Leigh Street, in the heart of Liverpool City Centre. This modern apartment offers comfortable city living, ideal for tenants seeking a central base.

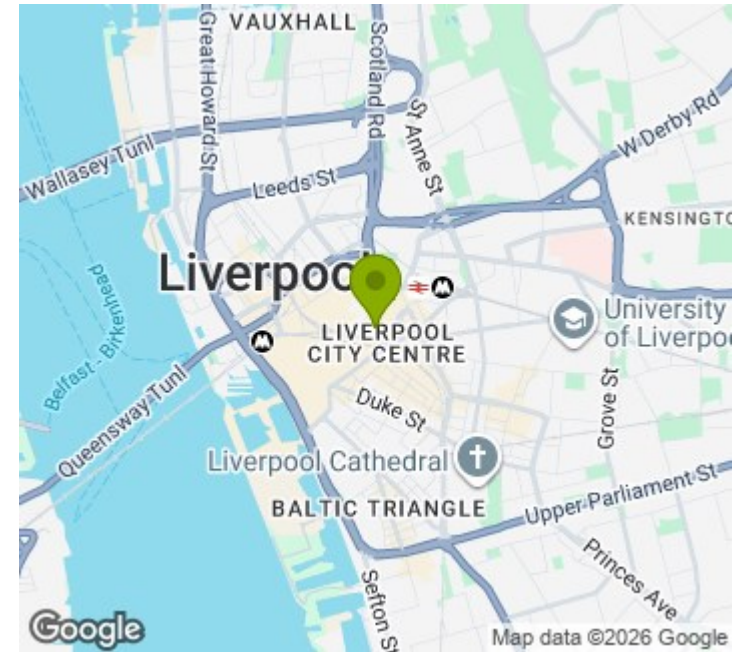
Positioned on Leigh Street, the property benefits from immediate access to a wide range of shops, restaurants, bars, and local amenities. It is conveniently situated within walking distance of both Liverpool Central and Liverpool Lime Street stations, providing excellent transport links across the city and beyond.

Please note, there is no parking available with this property.

EPC Rating – C. Council Tax Band – A. A deposit of £836.00 is required upon move in.

Contact us today to arrange a viewing.

- EPC Rating - C
- Council Tax Band - A
- Deposit - £836.00
- Top Floor, Studio Apartment
- Fully Furnished
- No Parking
- Immediate Move In



Energy Efficiency Rating

| | Current | Potential |
|---|----------------------------|-----------|
| Very energy efficient - lower running costs | | |
| (92 plus) A | | |
| (81-91) B | | |
| (69-80) C | 74 | 74 |
| (55-68) D | | |
| (39-54) E | | |
| (21-38) F | | |
| (1-20) G | | |
| Not energy efficient - higher running costs | | |
| England & Wales | EU Directive 2002/91/EC | |



City Residential
81/87 Victoria Street, The Old Haymarket, Liverpool L1 6DG
T: 0151 231 6100 F: 0151 231 6105
E: sales@cityresidential.co.uk



WWW.
cityresidential
.co.uk